

Brakenhale School Parent News

29th September 2017



Dear Parents/Carers

This week has been a really busy one with a number of tours taking place across the school. We have had some fantastic feedback already about how wonderful parents and students are finding the school environment. We are very proud of the way our students have behaved during the tours as they have been studiously working and showing how much they enjoy their learning.

On Monday we had Dean Beadle arrive to give both staff and parents a talk about Autism. Not only did we have some really positive feedback about how useful this was across the board, but Dean himself was very impressed with students and teachers alike. It was a very informative talk and if you did not manage to join us I would highly recommend attending one of his sessions.

On Thursday we had the Sixth Form information evening which had a great turn out. Staff were able to speak to students about how they were settling in and give some advice on their next stages. We also had visitors from the Greenshaw Trust with us during Thursday and Friday dropping into lessons and observing teaching and learning. Overall they were very impressed with the students and staff. Thank you to all the staff who were involved with this.

We would like to give a heartfelt thanks to Father Peter at St Michaels Church who recently donated some clamp stands to our Science department at a value of £100. These will be most useful and we are always very grateful for any donations that we get. Our students will get a lot of benefit from these. We have also had a large amount of theatrical equipment donated to our Drama department and we are looking forward to making use of both the equipment and costumes in our upcoming shows.

Next week we will be busy holding more tours for future students. We are also having a PTA Cheese and Wine event on Tuesday 3rd October and all parents are invited to attend, please let the main school office know if you are interested. Then on Thursday there will be a meeting for parents and students who are interested in attending the Ski Trip.

Kind regards

Jane Coley, Headteacher



What's on next week

Tuesday 3 rd October	PTA Meeting, Cheese & Wine event – 6pm
Wednesday 4 th October	Sixth Form STEM Conference, Bracknell
Thursday 5 th October	Ski Trip Meeting for Year 8 and 9 parents – 6pm
Friday 6 th October	Non Uniform Day Year 13 What Career Live Conference, London

PTA Events

Please join us next Tuesday for our Cheese and Wine Evening from 6pm in the main hall.

This will be an informal opportunity to meet with members of the PTA, the school's Senior Leadership Team and other parents, and we would be delighted for you to stay to the first PTA meeting of the school year which will follow the event.



A very warm welcome to our school PTA

All parents and members of the school community can get involved in the PTA. Even if you only have a small amount of time available, all parents are automatically members when their children join our school. We meet on a Tuesday once every half term from 7.00 pm or you can just help at various events when you have the time. If you think this is something you would like to know more about, please come along to our next meeting. Alternatively, if you would like further information, please contact the school.

The PTA exists to provide closer links between home and school; a fun way to bring staff, parents and students together in support of a common goal. We run events such as School Discos, Christmas Market, Summer Fair stall, Bingo and Race Nights, and support school events and evenings with refreshments.

Our first meeting this year will include a **CHEESE & WINE EVENING**, with light refreshments, from 6pm on **Tuesday 3rd October 2017**

This will be a chance to see how the PTA runs, meet our Senior Leadership Team, key people in the PTA and other parents.

Please join us!

PTA
Brakenhale School
PARENT TEACHER ASSOCIATION

BRAKENHALE PTA AGM

Next month, on Tuesday 7th November, we will be holding our Annual General Meeting (AGM), where last year's committee is dissolved and we elect new members for the coming year.

If this is something you would be interested in, we will be sending out more details over the next week. Alternatively, you can contact the school.

The PTA is involved in various events during the year, having fun and raising money for the school. Last year we successfully put on school discos, organised the Christmas Market, hosted a Bingo Evening and put on a stall at the Lions Bracknell Show.

We also held various raffles, collected clothing to recycle for our Bag 2 School initiative and manned the first water station for the Bracknell Half Marathon. Together with providing refreshments for such school events as parents' evenings and Sports Day, the PTA play an integral part in school life.

Do come along to find out more about us and how you can help.

Martina Leahy, Brakenhale PTA Chair



BRAKENHALE SCHOOL
Parent Teacher Association

Differently Abled - Living with Autism

On Monday we welcomed an inspirational speaker Dean Beadle to school to speak to both staff and parents about Living with Autism.

Dean Beadle has toured the UK for ten years sharing his experiences of life on the autism spectrum. He is also an experienced journalist, having been published in local, regional, national and international publications. An interview with Dean is featured as a key resource in the Autism Education Trust training programme which has just celebrated training 100,000 schools staff. Dean is also a singer and performs at charity balls and various events across the country. Dean is honorary president of 'Autism Puzzles' - a parent led charity in Cardiff, Wales and patron of SPACE, a parent led charity in Hertfordshire.



Dean gave an amusing, entertaining and highly educational talk about his journey living with autism and gave a tremendous insight into how the mind of a person on the autism spectrum sees the world and reacts to everyday events and experiences in a way that can be difficult to appreciate.



School Office

House Assemblies

This week has seen the very first House assemblies for our brand new Houses; Swinley, Jennetts, Temple and Farley. Students have met as a whole house across all year groups each morning in the Main Hall with their Head of House.

Mr Duffy started the week off on Monday with the Jennetts House assembly, Mr Jackson-Sankey lead the Swinley assembly on Tuesday, Mr Bell spoke to Farley on Wednesday and Miss Haley finished the first round today (Thursday 28th) with Temple.

During the assemblies the students were reminded of what was expected of them in terms of their contributions to our House system and several opportunities were advertised, including the chance to become House Captain or Vice Captain for their year group. Students who are interested in these prestigious positions should see their Head of House.



Current standings (which are changing every minute!) were also shared with the students. At the time of writing the standings are: Swinley 1341 points, Temple 1333 points, Jennetts 1328 points and Farley 1282 points. Points are awarded on a daily basis to students for academic achievement (up to 3 points for outstanding work), school community contribution and extra curricular participation.

We look forward to the next round of House Assemblies which will be held towards the end of the Autumn term.

Mr W Yeates, Head of PE

Year 13 Microsoft Interviews

Year 13 were fortunate to have a 1:1 interview experience with six senior workers from Microsoft’s UK headquarters in Reading this week.

After submitting their CVs, researching the company and selecting a hypothetical higher apprenticeship, the students had a 25-minute interview. Part of the interview was receiving direct feedback on their interview and CV from their interviewer that will hopefully give them the vital edge when they apply for the real vacancies and university courses over the next few months.

Brakenhale would like to sincerely thank Microsoft for their ongoing support, time and involvement in our school.

Mr A Hartley, Deputy Headteacher



Lost Property

Correct School Uniform



The Brakenhale School
High Expectations and Challenge for All





PLAIN BLACK OUTDOOR COAT

BLACK BLAZER (with school badge)

OPTIONAL BURGUNDY V-NECKED JUMPER (with school badge)

WHITE SHIRT (buttoned at the neck)

SCHOOL TIE (sitting under the shirt collar; knotted at neck, touching the waistband)

PLAIN BLACK TROUSERS or SCHOOL SKIRT (for girls, with logo on waistband, knee-length)

PLAIN BLACK ANKLE SOCKS / PLAIN BLACK TIGHTS (for girls)

POLISHABLE PLAIN BLACK SHOES

BRAKENHALE SCHOOL BAG



SCHOOL SKIRT (with logo on waistband, knee-length)



SCHOOL TIE (sitting under the shirt collar; knotted at neck, touching the waistband)



SCHOOL BAG (with logo)



JEWELLERY (One small gold or silver stud earring)



PLAIN BLACK SHOES (English-style, with laces)



ANKLE SOCKS

We have a few items of lost property remaining which are not named.

If your child has lost any items at school could they please come to the Head of Year office to see Mrs Theal to look through the lost property.

All unnamed items are held for 2 weeks before being re-used as spare uniform or PE kit. Any unclaimed items will be held until Friday 13th October and then recycled.

It is important that all items of uniform and kit are marked with a student’s name. This enables us to return all named items to the relevant student.

Many thanks for your help and cooperation in this matter.

Mrs Theal, Curriculum Support

High Expectations and Challenge for All

Using the Roads Safely

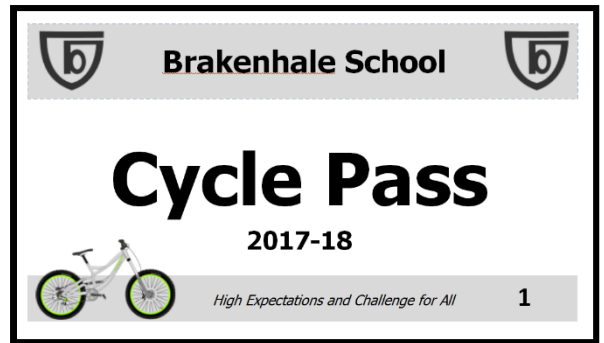
Please can we take this opportunity to remind you that as a school, we always want to maintain positive relations with all residents in our local community and would be really grateful if this can be considered when dropping/collecting students from the school. In particular could I ask that driveways and roads are not blocked so that residents can still access their homes and vehicles; please take extra care in and around Coningsby. Please remember that the zigzag lines in Coningsby opposite Rectory Close are there to keep the area clear to allow an unrestricted view for approaching drivers and children wanting to cross the road. All road users have a responsibility to each other and pedestrians to drive and park with consideration for others. Bracknell Forest have advised us that enforcement action will be taken against illegally parked vehicles outside schools.

Please also ensure that you park and drive courteously around the school site including not obstructing the gateways as this gets particularly busy during school drop off and pick up times.

Wherever possible we would encourage students to walk or cycle to school. We have introduced a safety Cycle Pass scheme this term, so students require a permit and a helmet if they cycle or scooter to school.

Your support in these matters is much appreciated as always

School Office



<p>Considerate Car Use</p> <p>The Council has a duty to promote sustainable travel to school. Encouraging children to walk or cycle to school benefits us all:</p> <ul style="list-style-type: none"> our children get regular exercise and learn vital road safety skills our local communities are not inconvenienced by lots of cars at peak times the air we breathe outside the school gates is cleaner we are not adding to global pollution <p>Cars and scooters do not mix well. Children can be easily distracted when approaching or leaving school and this is when accidents can happen. However, you recognise it is not always possible to walk or cycle. If you feel you really have to drive to school, please bear in mind the following points.</p> <p>The wellbeing of children is of prime concern and your cooperation and consideration when driving will help us create a safe environment around our schools.</p>	<p>Park and Stride</p> <p>Consider parking further away from the school and walking part of your journey – this disperses the cars and reduces the number in any one location to a safer level. It is also an opportunity to talk to your child, teach them road safety skills and for them to learn about their surroundings.</p> <p>Avoid the pavement</p> <p>Do not drive or park on the pavement - children are taught that the pavement is a safe place to be. Blocking the pavement, even if only half-way, makes it difficult for those who do want to walk. Especially for parents walking with buggies.</p>	<p>Junctions</p> <p>Do not park within 10 metres of a junction in any direction - this allows motorists the safe visibility they need to see approaching traffic (the police have the power to enforce this restriction). You don't want to be involved in an accident, and you don't want to face a fine.</p> <p>Reversing</p> <p>Try to avoid reversing manoeuvres near a school. It can be very hard to see small children directly behind you. If you must reverse, please take extra care.</p> <p>General inconvenience</p> <p>Please park so that you do not cause inconvenience to anyone else – this includes double parking, blocking residents' driveways, and parking right outside someone's window. None of us would like it if we were prevented from getting out of our driveway.</p>	<p>Parking restrictions</p> <p>Do not park where you are prevented from doing so by restrictions – single yellow lines with time restrictions, double yellow lines and school keep clear zig-zags. These restrictions are often deliberately placed to allow safe crossing of the road. You may be glad of them when crossing to your car.</p> <p>Dropped kerbs</p> <p>Dropped kerbs are there to assist people with pushchairs and wheelchairs to cross the road. Although it may be tempting if they provide a convenient space, please don't park so that you block them. You are depriving someone of an accessible place to cross the road.</p>	<p>Verges</p> <p>Do not park on the verges – the damage caused to these areas is both unsightly and costly to repair. They are usually deemed part of the highway so any parking restrictions apply to the verge also.</p> <p>Speed</p> <p>Please drive slowly at school times, children may suddenly step out into the road. Research shows that if you hit a child at 40 mph there's an 80% chance they'll be killed, but if you hit them at 30mph there's an 80% chance they'll survive. At some schools the limit is only 20mph.</p> <p>Car doors</p> <p>For safety reasons it is advisable when picking up or dropping off children to park your car such that children can get in or out on the kerb side of the car. In this way they are not getting out straight into traffic. However, please be aware of other pedestrians using the footway before opening your doors, as you may hit or obstruct them.</p> <p>Further information</p> <p>For details about more sustainable travel to school visit the School Travel Plans page on the Council's web site at www.bracknell-forest.gov.uk or contact the Council on 01344 352000. © Delphi and Print Services 2009</p>
--	--	---	--	---

Young Interpreters Club

We are looking for young people to join our Young Interpreters Club on Thursdays!

We also have the Culture Club on Fridays and an EAL (English as an Additional Language) Homework Club on Mondays and other days if needed.

All clubs run after school between 3.05pm and 4.05pm in the LRC/Connection room.

Miss Cmok, EAL Coordinator

**Brakenhale Presents...
in 2018**

Please watch this space for updates!



Parent Support Group



at Brakenhale

**Wednesday 11th October
9.30am to 11am**

Please come and meet our Family Support Worker and other parents to discuss all aspects of living with teenagers.

Refreshments will be provided.

Please come to main reception where Tracey Gosling, our Family Support Advisor will meet you.



Future Meeting Dates:

Friday 1st December ~ 9.30-11am

Thursday 1st February ~ 1.30-3pm

Monday 19th March ~ 9.30-11am

Wednesday 2nd May ~ 1.30-3pm

Wednesday 27th June ~ 9.30-11am

Brakenhale School
Rectory Lane
Bracknell
Berkshire
RG12 7BA

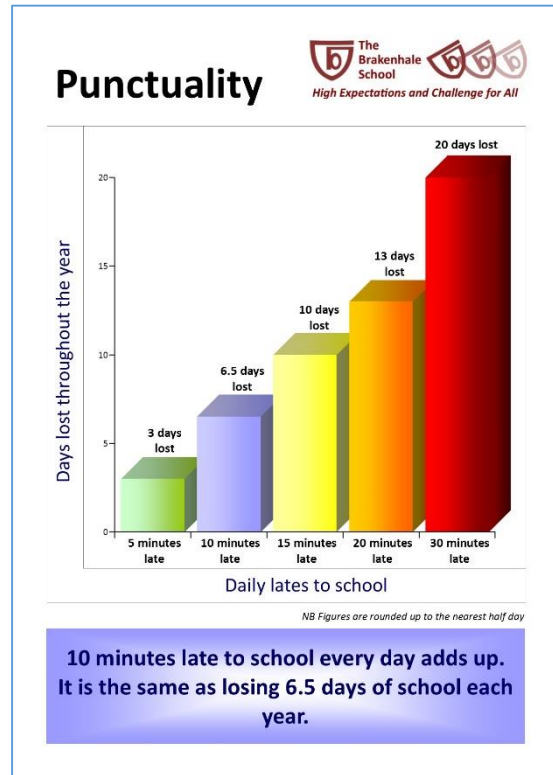
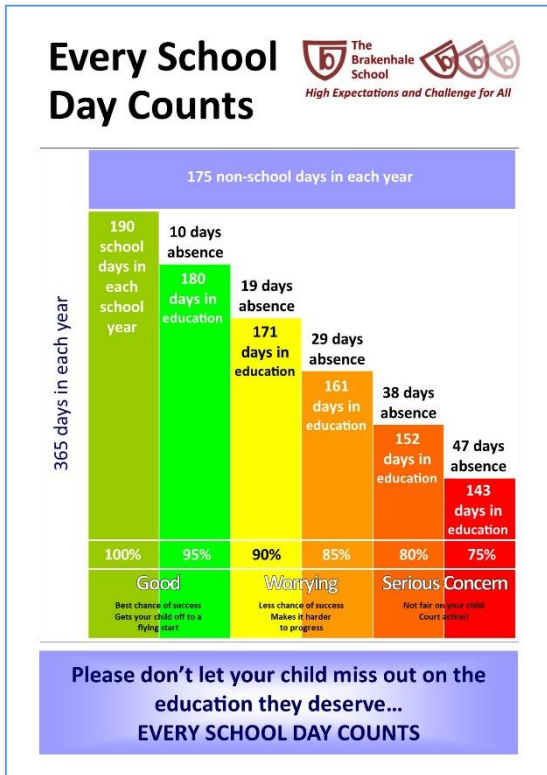
01344 423041

tgosling@brakenhale.co.uk

High Expectations and Challenge for All

Attendance

These posters show the effect of lateness and poor attendance and are the basis of every attendance conversation that we have in school.

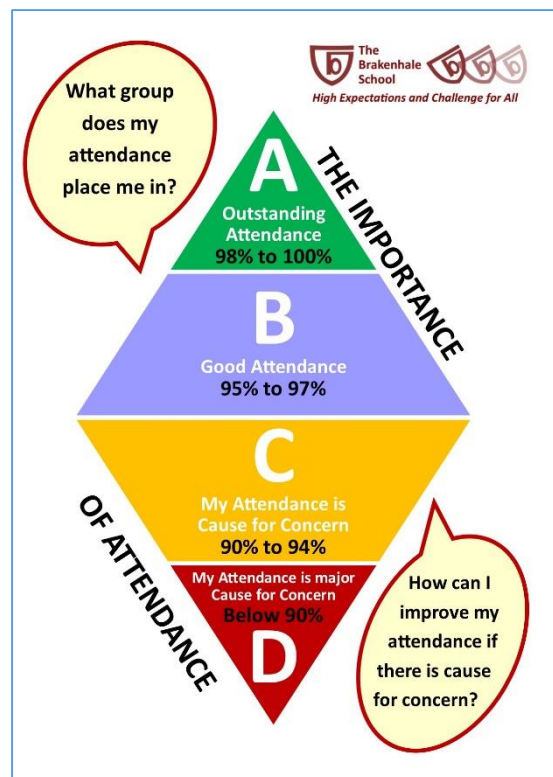


How does your Absence affect your Attendance figure in any six week term?

The Brakenhale School
High Expectations and Challenge for All

School Expectations	Attendance	Not more than...
Excellent	98% and more	1 day
Good	97% to 96%	1.5 days
Requires Improvement	95% to 91%	2 days
Concerns	Below 90%	More than 3 days off
Serious Concerns	85%	More than 4.5 days off
	80%	More than 6 days off


NB Figures are rounded up to the nearest half day




As always please get in touch if there is anything that we can do to support you by telephone on 01344 465050 or by email on schoolattendance@brakenhale.co.uk

Mrs Evans, Attendance Officer

Brakenhale Canteen



The Brakenhale School



WEEK COMMENCING :- 11 SEPT, 2 OCT

Week 2	MONDAY	TUESDAY	WEDNESDAY	THURSDAY	FRIDAY
Hot main meal option	British Farm Assured Cumberland Sausages	British Farm Assured Chicken Korma	British Farm Assured Roast Chicken Breast	British Farm Assured Beef Chilli Con Carne	MSC (Marine Stewardship Council) Battered Fish
Hot vegetarian meal option	Spinach and Cheese Cannelloni	Veggie Curry	Roasted Vegetables Tart	Vegetable Fajita	Cheese Omelette
Carbohydrate option	Rice Garlic Bread	Naan Bread	Roast Potatoes	Mashed Potatoes	Baked chips
Vegetables options	Seasonal Vegetables	Seasonal Vegetables	Seasonal Vegetables	Baked beans	Peas, Baked Beans
Hot Pudding	Apple Crumble served with custard	Chocolate and Banana Sponge	Raspberry and Coconut Crumble	Carrot Cake and Custard	Baked Mixed Fruit Pie served with fresh cream

We have available every day

- Yogurt bar for breakfast
- Salad bar where you build your own salad
- Homemade bread

We use locally sourced ingredients when available and in season

All our menus are nutritionally analysed to ensure they meet and in most cases exceed The School Food Standards

Cardiac Pulmonary Resuscitation - CPR

We are really excited to have the opportunity for all students in all year groups after Christmas to be taught CPR (Cardiac Pulmonary Resuscitation) with the help of equipment kindly provided by the British Heart Foundation.

If you have any objections to this please contact Mrs Ball, our Health Coordinator, at school, via telephone or email.

Mrs A Ball, Health Coordinator

Email: aball@brakenhale.co.uk

Telephone: 01344 423041



Nation of Lifesavers



BRAKENHALE SCHOOL

WELCOME

Thank you for joining the Nation of Lifesavers

PE News

This week has been another busy week for the PE department and has seen the start of the fixture season. We have had 114 students attending clubs and fixtures but we did have to close early on Thursday due to Open Evening.

Valuables during Extra-curricular Clubs and Fixtures

Students are advised to bring their valuables with them when attending an extra-curricular club or fixture. There will be somewhere for them to put them. We cannot guarantee changing rooms are locked due to the number of clubs/fixtures each night and the different finishing times. If you have any concerns about this please get in contact.

Star of the Week

Every week the PE department will be nominating a star of the week, this can be for efforts within a lesson or extra-curricular club or performance during a fixture.

This week our star of the week is awarded to Taylor Radcliffe (Year 12) who was fantastic at Open Evening; she was showing off her trampolining skills and answering questions that parents had. Well Done Taylor!

Open Evening

The PE department would also like to thank the following students for helping the PE department at Open Evening last Thursday. We could not have showed off the department without you. Playing badminton or trampolining for two and half hours was very tiring, in addition to speaking to parents and sharing your love of PE.

A massive thank you to Emily (Year 10), Asha (Year 11), Amy (Year 11), Claudia (Year 11), Ben (Year 11), Alex (Year 13) and Taylor (Year 13).

Cross Country

On Tuesday 26th September, Brakenhale sent a team of Cross Country runners to compete in the first leg of the girls' competition at Highdown School. Our girls competed well and all came away from the event feeling pleased with their performances and all with new targets to beat for next week!

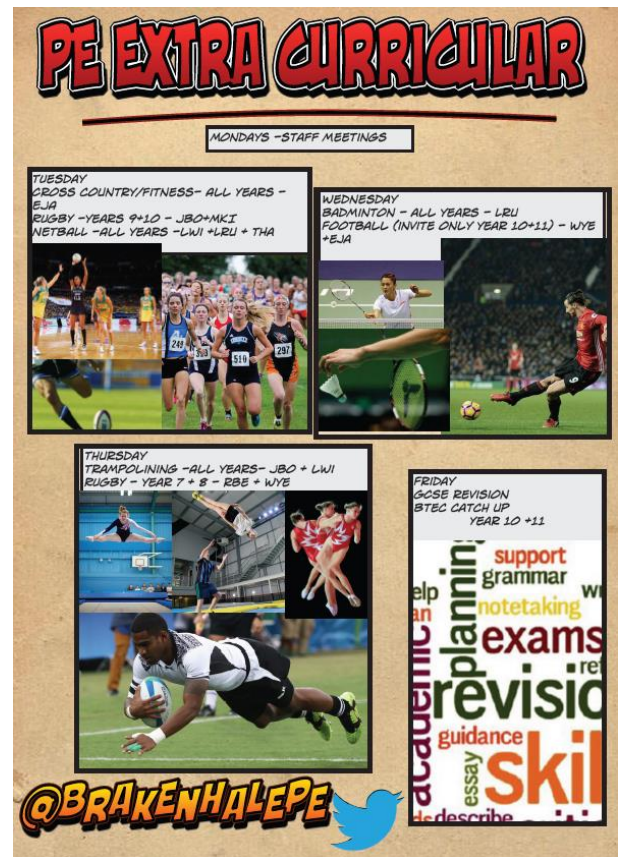
At the time of writing the boys had not competed - their report will come in next week's parent news, together with a write up of the **Rugby** tournament.

Fixtures next week

Tuesday 3 rd October	Girls' Cross Country@ Bulmershe
	Year 10 and 11 Netball v Garth @ Home
Wednesday 4 th October	U16 Football @ Charters
	U15 Football v Weydon @ Home
Thursday 5 th October	Boys' Cross Country @ Reading Blue Coat

Good luck to everyone taking part.

Miss L Willimott, Lead Coordinator of Girls PE and Teacher in Charge of Health and Social Care



School Lottery

Don't forget to join up and purchase your tickets to start helping our school. If you haven't signed up now would be the time. This is an easy way to make money for the school and be in with a chance for winning. Thank you to all who have bought tickets and who continue to support the school.



Why not join today and not only will you be in with a chance of winning in the weekly prize draws but you will be helping to raise money for the school at the same time.

Click here to [Support the Brakenhale Lottery](#)

This term School Lottery are offering the chance to win an Amazon Echo Dot. You can find full details on their website.

Our School Lottery is a fun and effective way to raise money to help improve our school but we need your help to make it the best it can be.

Why not join now!

Easy Fundraising

With easyfundraising.org.uk you collect free donations to your selected cause every time you shop. You can make a big difference on everything from groceries to getaways and it doesn't cost you a penny!

When you shop the easyfundraising way with one of their 3083 shops and sites they give easyfundraising a commission for your purchase which is turned into a donation for your selected good cause.

When you visit the website easyfundraising.org.uk - simply search for the retailer you want to shop with and click out to them using the green 'Go Shopping' button. You will be taken straight to the retailer's website and your experience will be identical as if you had gone there directly but easyfundraising will be able to track your purchase to ensure a donation for your good cause.

You can also install their Donation Reminder - this means a box will appear if you are shopping with a retailer who participates in the Donation Reminder and you don't even need to visit the easyfundraising site! All you need to do is click Activate Donations and any eligible purchase will be recorded for you. Take a look at the Donation Reminder [here](#). The Donation Reminder is supported by Chrome, Firefox, Internet Explorer and Safari but can't work on mobile phones or tablets.

Shopping on your mobile? No problem, for mobile phones and tablets there is the handy easyfundraising App, perfect if you like to shop on the go and available completely free of charge from your App store. Now you can not only shop using it but you can check out your own donation total and see how your cause is getting on too. More information can be found [here](#).

Don't forget to shop through www.easyfundraising.org.uk to effortlessly help raise money for the school!



Future Diary Dates

Thursday 12th October

Year 7 Meet the Tutor Evening – 4pm to 7pm

Term Dates

AUTUMN TERM 2017

*Inset Days: Friday 1st and Monday 4th September
Inset Days: Monday 18th and Tuesday 19th December*

Term dates for students:

Tuesday 5th September – Friday 15th December 2017

Autumn Half Term – Monday 23rd to Friday 27th October

Christmas Holiday for students – Monday 18th December to Tuesday 2nd January 2018

SPRING TERM 2018

Term dates for students:

Wednesday 3rd January – Thursday 29th March

Spring Half Term – Monday 12th to Friday 16th February

Easter Holiday – Friday 30th March to Friday 13th April

SUMMER TERM 2018

Term dates for students:

Monday 16th April – Friday 20th July

Inset Day: Monday 23rd July

Summer Half Term - Monday 28th May to Friday 1st June

Summer Holiday for students – Monday 23rd July to (date to be confirmed)

Bracknell Forest term dates can be found on their website:

<http://www.bracknell-forest.gov.uk/schooltermandholidaydates>

#challengeforall

Brakenhale School, Rectory Lane, Bracknell, Berkshire RG12 7BA

☎ 01344 423041 ~ 📧 mainreception@brakenhale.co.uk ~ 🌐 www.brakenhale.co.uk

High Expectations and Challenge for All